

Mac Driver installation

1.1. Installation.

1. Extract this archive creating the **sewoo_macos_20260409** directory automatically.

```
# tar -zxvf sewoo_macos_20260409.tar.gz [Enter]
```

2. Open your favorite shell (bash, etc.) and move to the **sewoo_macos_20260409** directory.

```
# cd sewoo_macos_20260409 [Enter]
```

3. Execute the 'su' command to obtain super-user level permissions.

You must enter the root user's password for this to succeed. Be careful!.

4. Type 'sudo sh setup.sh' to install this package onto your computer.

```
# sudo sh setup.sh [Enter]
```

A successfull install should result in output similar to this:

Vendor

Vendor POS Printer Series CUPS DRIVER Mac OS Installer

Models included:

SEWOO LKT Series

SEWOO SLK Series

Vendor POS Printer

Generic POS Printer

SEWOO SLK-SL103

Searching for ServerRoot, ServerBin, and DataDir tags in /etc/cups/cupsd.conf

ServerBin tag not present in cupsd.conf - using default

DataDir tag not present in cupsd.conf - using default

ServerRoot =

ServerBin =

DataDir =

Copying rastertolkt filter to /usr/libexec/cups/filter

Copying rastertoslk filter to /usr/libexec/cups/filter

Copying rastertovendorprt filter to /usr/libexec/cups/filter

Copying rastertogeneric filter to /usr/libexec/cups/filter

Copying rastertosl103 filter to /usr/libexec/cups/filter

Copying model ppd files to //usr/share/cups/model/SEWOO

Restarting CUPS

Install Complete

Add printer queue using Printing Manager, or

Add printer queue using OS tool, <http://localhost:631>, or <http://127.0.0.1:631>

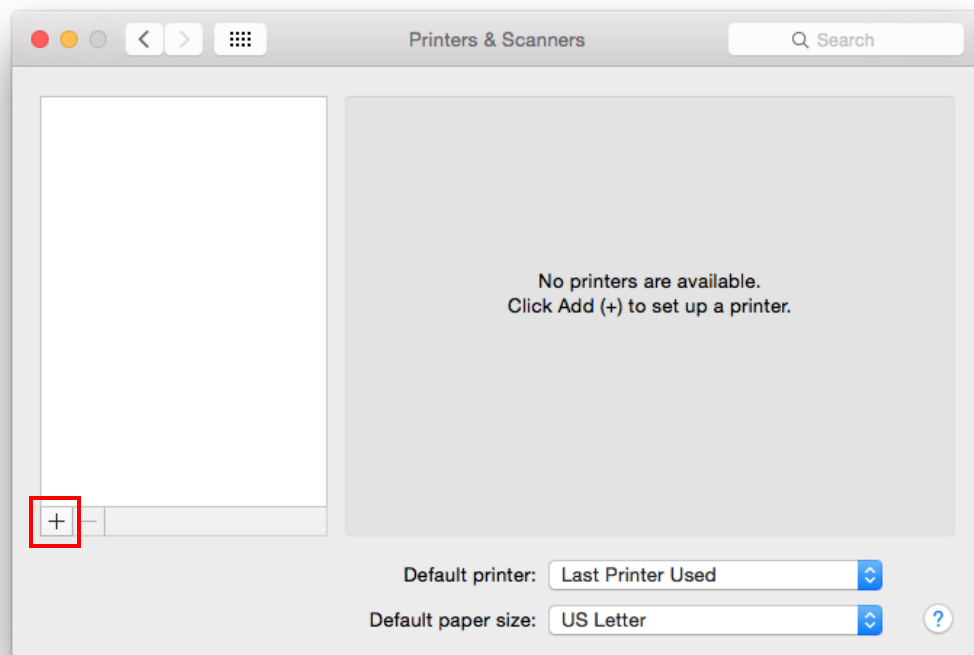
1.2. How to Add Printer

System Preferences → Print & Fax or <http://127.0.0.1:631>

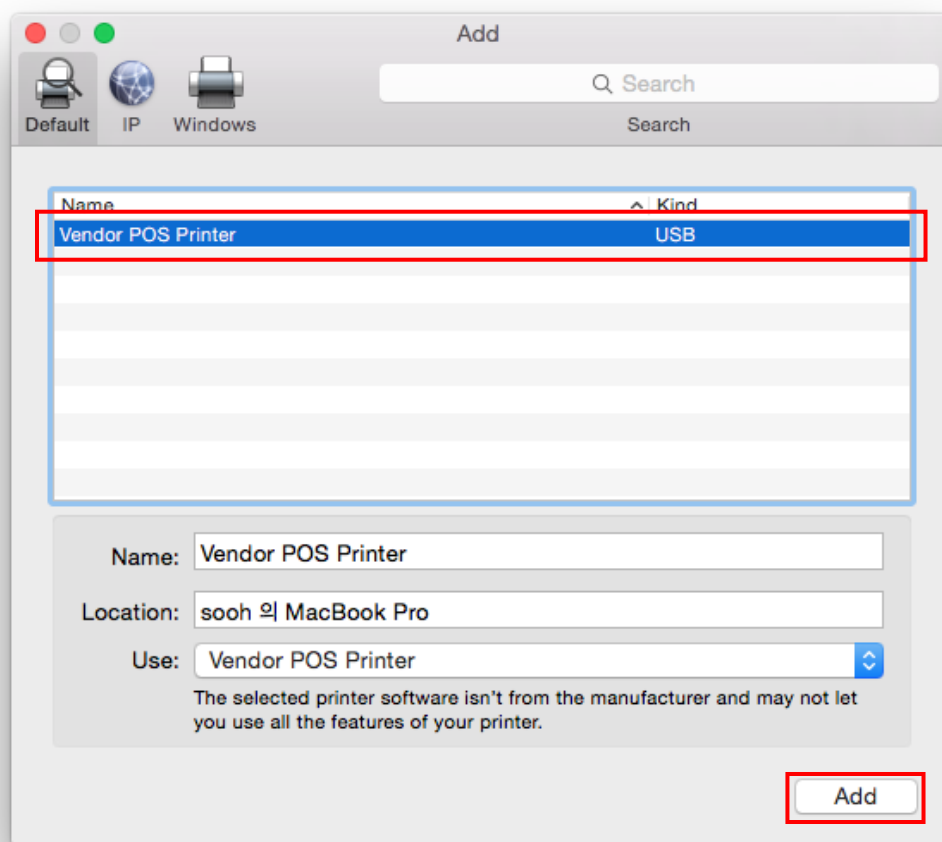
1.2.1. On the Apple menu, click System Preferences and click Print & Fax.

1.2.2. Connect the printer to desktop and turn on the printer.

1.2.3. Click the “+” button to add printer.



1.2.4. Select the “Vendor POS Printer” and click “Add” button.



1.2.5. Complete.

